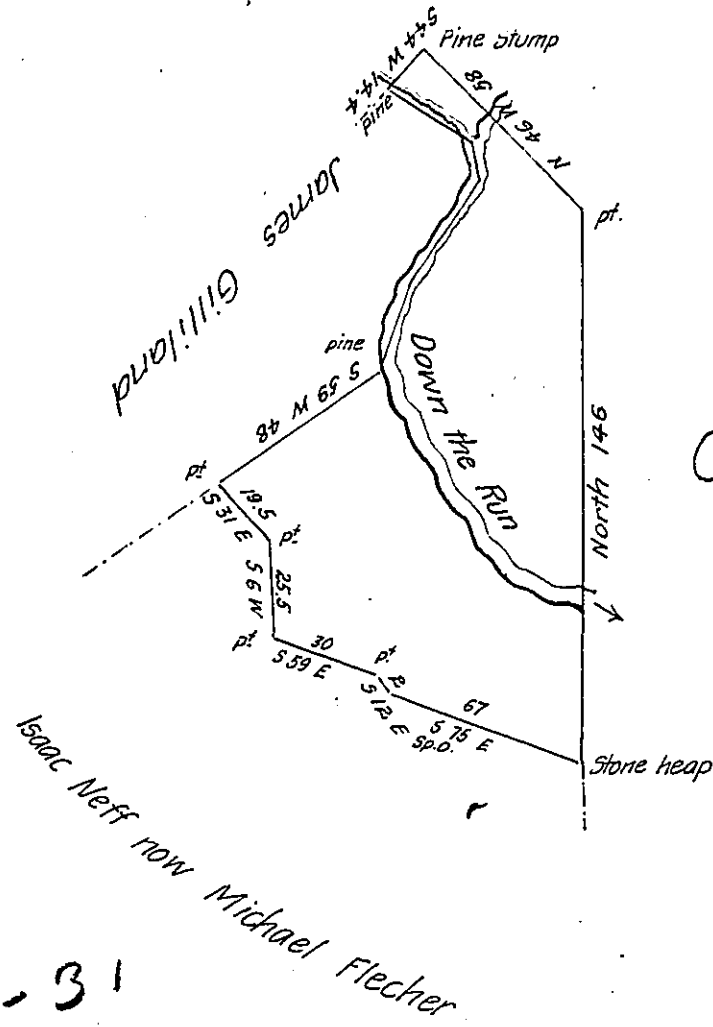


The Courses & Distances
Down the Run from the
Pine to the Pine are

- s 54 E 26
- s 15 E 9
- s 55 W 20
- s 16 W 18
- s 19 W 23 Pine



C 98-201

C 66-31

Situate in Barree township Huntingdon County Containing Sixty
two Acres 81 perches & allowance Surveyed the 14th day of Octr A.D. 1841
In pursuance of a warrant granted to James Leonard dated the 15th day
of April 1839

W^m Reed D.S.

Jacob Sallade Esqr.

Surveyor-General.

IN TESTIMONY that the above is a copy of the original remaining on file in
the Department of Internal Affairs of Pennsylvania, made
conformably to an Act of Assembly approved the 16th day of
February, 1833, I have hereunto set my Hand and caused
the Seal of said Department to be affixed at Harrisburg,
this fifteenth day of November 1905

Loac R. Brown
Secretary of Internal Affairs.